

portofedmonds.org

info@portofedmonds.org

Volume 22 No. 7

CRAB OPENING IN AREA 9



Hurray! Crabbing season is officially upon us. From now until Labor Day, crabs may be harvested every week Thursday through Monday.

Crabbing is one of Puget Sound's most popular recreational fisheries. Each year, sport fishers catch more than a million pounds of Dungeness crab, using pots, and ring nets and – in the case of wade and dive fishers – their bare hands.

In addition to meeting licensing requirements, everyone who fishes for crab in Puget Sound must carry and complete catch record cards to account for all Dungeness crab they catch. Recent changes in the reporting system now in effect:

★ **Two-card reporting system:** All sport crabbers fishing in Puget Sound are required to report their Dungeness crab catch on separate summer and fall/winter catch record cards at the end of each season. The new cards are separate from the multi-species card used for recording catches of salmon, halibut and other fish. People of all ages who have a crab endorsement and received a catch record card are required to make a report even if they did not go crabbing or catch any crab.

★ **On-line reporting:** Sport crabbers can either report their information on the WDFW crab reporting website or mail in their catch cards. The website address for reporting crab catches is printed on the catch record card along with reporting deadlines.

The reporting site will only accept catch reports during two time periods. Summer Catch Record Cards can only be entered from Labor Day through October 1st. Winter Catch Record Cards can only be entered from January 1st through February 1st. The reporting site will allow you to view your reporting history at any time.



TALL SHIPS TO VIST EDMONDS

Lady Washington, the official tall ship of Washington State, and her companion vessel the Hawaiian Chieftain will visit Port of Edmonds on August 18-21, 2017. Free vessel tours will be available for the community on Saturday and Sunday at 10am, but consider purchasing a ticket for an evening or battle sail, featuring demonstrations of tall ship handling, sea shanty singing, and maritime storytelling. Children 12 and under must be accompanied by an adult. Call 1-800-200-5239 for tickets and information.



The Lady Washington will be moored on the north side of J dock, and the Hawaiian Chieftain will be moored on the north side of I dock.

MARINA SEASONAL STAFF

You will see some familiar faces and some new faces on our seasonal staff team this year. Our 2017 team members are: Bill Mears, Conner Erickson, Rein Torgerson, Colby Saysanith, Doug Erickson, Galon Kinter, Nicko Latz and Mikel Selberg.

These team members are essential to our operations and allow the Port of Edmonds to accommodate longer operational hours in the peak months. Welcome aboard!

NEW OPERATIONAL HOURS

Marina Operations & Dry Storage Hours

Monday through Thursday 7am to 5pm

Friday, Saturday & Sunday 6am to 7pm

Effective Sunday July 16th

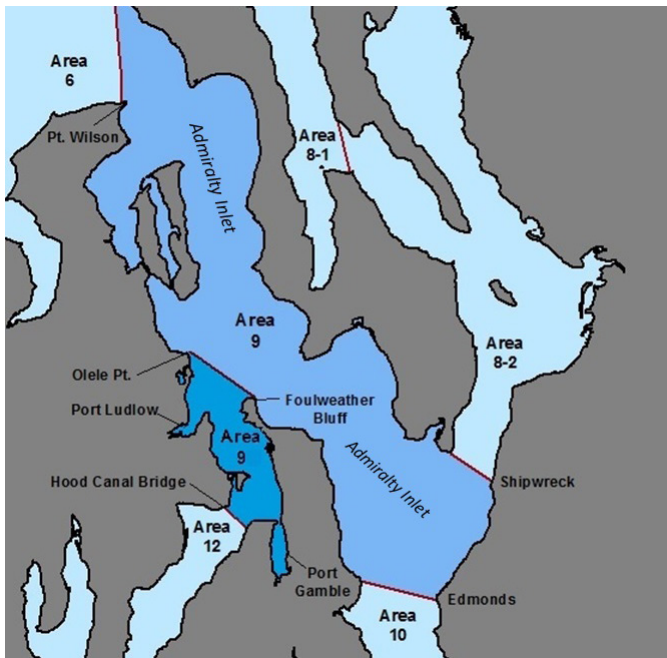
Quality • Service • Value • Convenience

SALMON OPENS - MARINE AREA 9

Marina Area 9 – Admiralty Inlet, refers to all waters inside and south of the Partridge Point – Point Wilson line, south and west of a line from Possession Point 110 degrees true to shipwreck, north of the Hood Canal Bridge, and north of the Apple Cove Point-Edwards Point line. Per Washington Sport Fishing Rules, Salmon fishing opens July 16, 2017 in Area 9 with the following regulations in effect:

CHINOOK – MIN. SIZE 22". Other SALMON species – no minimum size. Daily limit 2 (combined). Only 1 hatchery CHINOOK may be retained. Release CHUM, wild COHO, and wild CHINOOK.

For further details and current fishery openings go to www.wdfw.wa.gov/fishing



FREE VESSEL SAFETY CHECKS

US Coast Guard Auxiliary personnel will be available from 10am - 3pm in front of the Port of Edmonds Marina Operations office. Please stop by and visit them to sign up for a free safety check. Upcoming safety checks are as follows: July 8, August 12, September 9, and October 14, 2017. Call 425-327-1710 for details.

CONTACT US

Administration & Billing: 425-774-0549

Marina Operations, Moorage Office: 425-775-4588

Dry Storage: 206-940-1348, Security: 425-508-7490

SEA JAZZ CONCERT SERIES

Award winning musicians from the Edmonds School District will hold performances in the Port of Edmonds Public Plaza, every Wednesday evening from 5:00-7:00pm, and Sunday afternoon from 1:00-3:00pm.



LOW TIDE ALERTS: DRY STORAGE

During Summer months, the tide will drop to extreme levels, which impact the usage of the launch. Typically service is only affected 1.5 hours before and after a low tide. Please call to confirm the status of the dry storage launch and if service has been impacted by low tides at 206-940-1348. Note the following dates below:

JULY 2017: 22nd -2.9 10:36am, 23rd -3.1 11:23am
24th -2.8 12:09pm

VESSEL REGISTRATION

Washington State Vessel Registrations expired June 30th. Please submit a copy of your new vessel registration to the Moorage Office before August 31st.

RECAP OF COMMISSION MEETINGS

May 29

Edmonds Waterfront Center Presentation, 1st Quarter 2017 Financial Statements, Vacant Parcel Planning Contract

June 26

Approval of Harbor Square asphalt repair contract, approval of Harbor Square building 5 HVAC contract

PORT COMMISSION MEETINGS

July 10 Agenda:

Meeting cancelled

July 31 Agenda:

Accounts Payable only, 9am

Find agendas and minutes at portofedmonds.org