

MONTHLY CLIMATOLOGICAL SUMMARY for MAR. 2010

NAME: data CITY: Edmonds STATE: WA
 ELEV: 0 ft LAT: 47° 48'41" N LONG: 122° 22' 57" W

TEMPERATURE (°F), RAIN (in), WIND SPEED (kt)

DAY	MEAN		TIME	LOW	TIME	HEAT	COOL	RAIN	AVG		TIME	DOM
	TEMP	HIGH				DEG	DEG		WIND	SPEED		DIR
1	49.8	56.9	6:06p	43.9	3:23a	15.2	0.0	0.00	2.6	13.0	2:24p	ESE
2	51.7	58.0	1:28p	48.5	6:12a	13.3	0.0	0.00	4.5	23.5	1:47p	S
3	47.9	50.4	3:23p	44.8	6:21a	17.1	0.0	0.00	3.3	15.7	9:08a	NNW
4	47.2	52.2	5:09p	43.8	12:56a	17.8	0.0	0.00	3.0	13.9	2:27p	SE
5	45.8	50.2	4:26p	39.1	6:50a	19.2	0.0	0.00	5.8	19.1	4:24p	NNE
6	45.8	50.8	3:09p	40.5	5:56a	19.2	0.0	0.00	4.0	11.3	5:40p	NNE
7	45.3	52.0	2:56p	38.2	6:08a	19.7	0.0	0.06	7.0	24.3	10:26p	ESE
8	41.0	43.5	2:17a	34.1	10:38p	24.0	0.0	0.00	7.2	21.7	5:37p	NNE
9	39.6	46.4	5:14p	32.8	6:36a	25.4	0.0	0.00	6.4	20.0	11:47a	SE
10	43.3	49.5	3:13p	38.0	1:51a	21.7	0.0	0.13	7.1	30.4	11:22p	SE
11	44.0	47.3	6:15p	38.9	5:33a	21.0	0.0	0.52	9.3	32.2	10:46a	S
12	44.9	50.7	10:10a	41.5	4:25a	20.1	0.0	0.41	7.6	38.3	10:18a	SSE
13	44.4	48.6	1:21p	41.5	5:35a	20.6	0.0	0.00	10.3	30.4	3:02a	S
14	46.4	54.2	4:18p	38.0	6:09a	18.6	0.0	0.03	4.4	12.2	9:22p	SE
15	48.3	52.2	7:24p	44.1	6:16a	16.7	0.0	0.03	2.8	17.4	2:37p	ESE
16	51.6	59.3	4:24a	45.4	11:58p	13.4	0.0	0.01	9.7	41.7	1:01p	S
17	46.9	50.1	3:48p	43.6	3:01a	14.1	0.0	0.01	8.1	23.5	9:42p	NNW
18	44.2	47.6	5:26p	38.2	7:37a	20.8	0.0	0.00	9.0	21.7	2:29p	NNE
19	46.4	51.6	6:14p	41.5	8:24a	18.6	0.0	0.00	7.4	15.7	5:31p	NNE
20	51.7	65.8	6:14p	38.9	7:50a	13.3	0.0	0.00	5.7	27.8	8:49p	S
21	51.8	55.7	3:36p	48.3	11:11p	13.2	0.0	0.00	9.0	29.6	4:59a	S
22	47.5	52.6	3:44p	43.1	6:42a	17.5	0.0	0.06	4.9	15.7	12:09a	SSW
23	47.9	52.0	3:48p	41.8	7:48a	17.1	0.0	0.00	3.6	13.9	5:36p	NNW
24	49.2	62.6	5:07p	43.2	5:52a	15.8	0.0	0.00	3.0	11.3	11:18p	NNE
25	49.6	53.3	3:58p	47.3	9:30a	15.4	0.0	0.19	7.7	25.2	9:33p	SSE
26	48.3	54.2	4:59p	43.8	8:02a	16.7	0.0	0.00	8.5	26.1	2:58a	S
27	51.1	60.2	5:55p	45.5	6:05a	13.9	0.0	0.00	4.8	20.0	11:42p	SE
28	50.9	58.0	12:20a	47.6	5:46a	14.1	0.0	0.12	9.2	29.6	3:42a	SSE
29	45.7	51.0	4:27a	41.1	11:16p	19.2	0.0	0.57	12.2	41.7	7:24a	SSE
30	43.7	48.8	3:29p	40.6	5:23a	21.3	0.0	0.00	10.3	28.7	1:41a	S
31	45.3	51.4	5:59p	40.2	7:27a	19.7	0.0	0.01	5.6	19.1	1:23a	SSW
	47.0	65.8	20	32.8	9	553.7	0.0	2.15	6.6	41.7	16	S

Max >= 90.0: 0

Max <= 32.0: 0

Min <= 32.0: 0

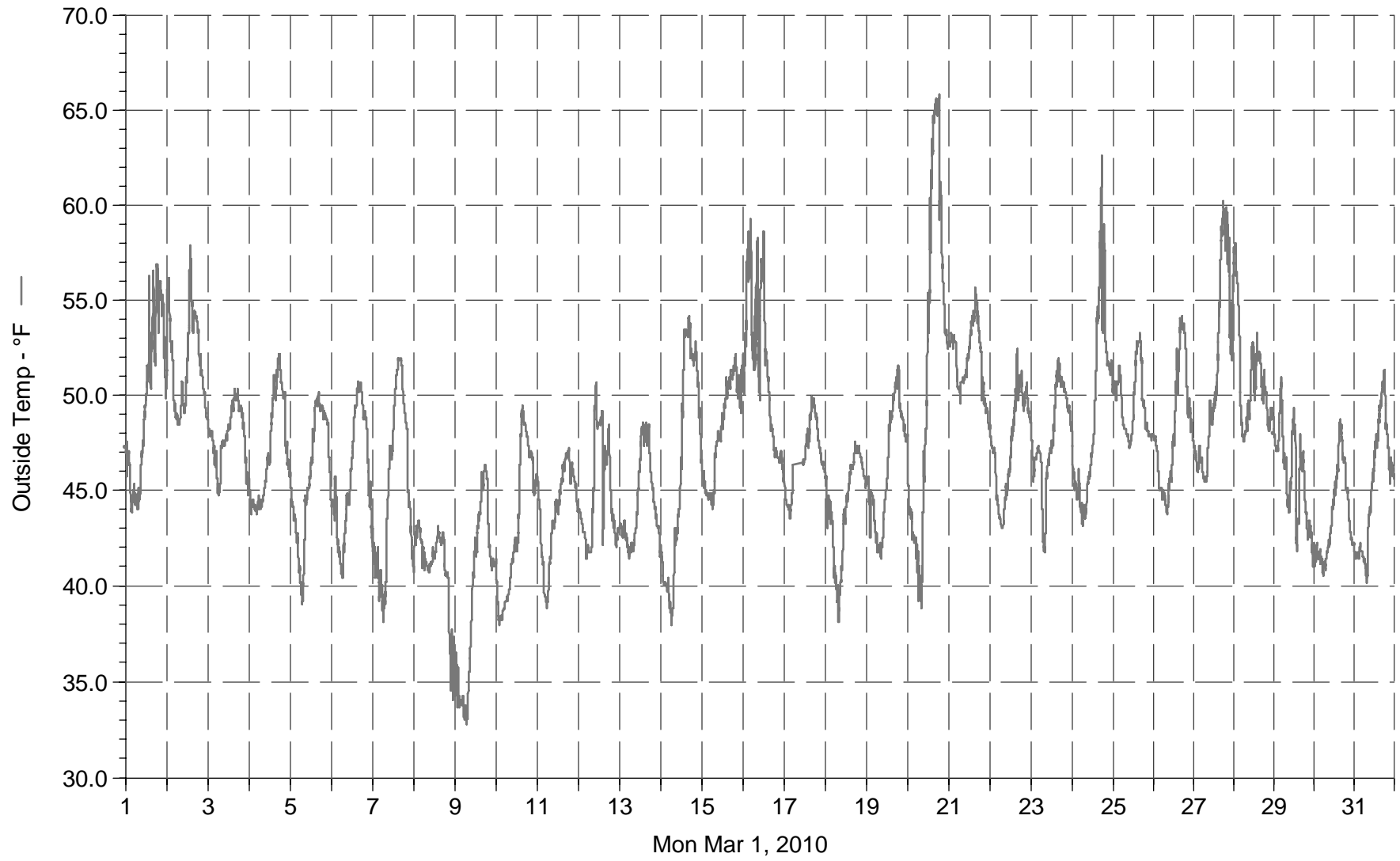
Min <= 0.0: 0

Max Rain: 0.57 ON 03/29/10

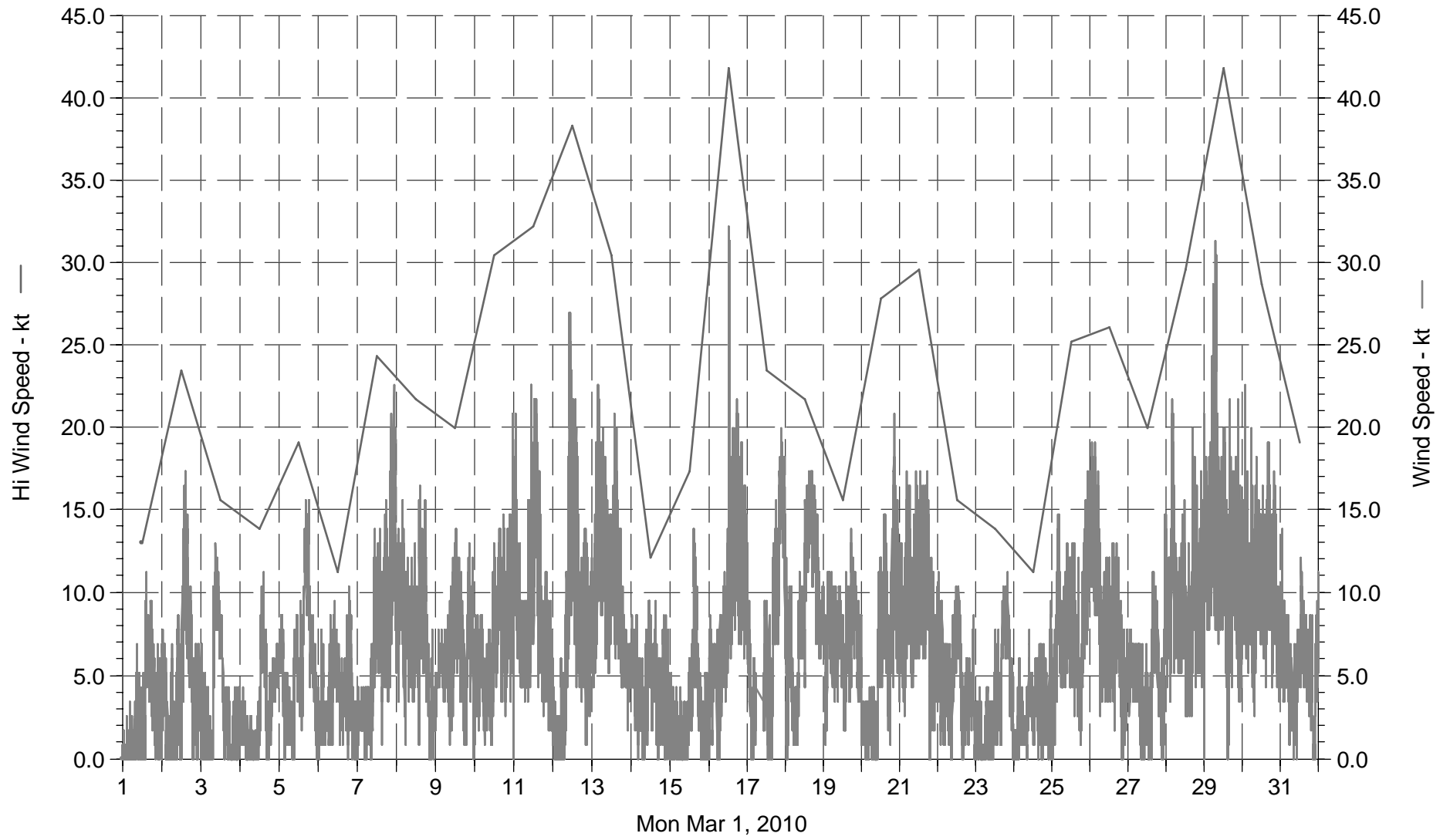
Days of Rain: 10 (>.01 in) 6 (>.1 in) 0 (>1 in)

Heat Base: 65.0 Cool Base: 65.0 Method: Integration

data



data



data

