

NOAA Monthly Summary Report

General station information (Station Name, City, State, Units of Measure, etc.) appears at the top of the report. For each day in the report, you can view the following information (and a total for the month):

- **Day**

Each row in the report shows information for a single day. The date for each row appears at the left of the row.

- **Mean Temperature**

The mean temperature for the day. At the bottom of the column, the mean temperature for the month is displayed.

If "Calculate using integration method" is checked in the Degree-Day section of the [NOAA setup dialog window](#), then the mean temperature is calculated by adding up all the temperature measurements for that day and then dividing by the number of samples. If "Calculate using integration method" is not checked in the NOAA setup, the mean temperature is the average of the daily high and low temperatures.

- **High Temperature & Time**

The high temperature for the day and the time at which it occurred. At the bottom of the column, the highest temperature recorded during the month and the day on which it occurred is displayed.

- **Low Temperature & Time**

The low temperature for the day and the time at which it occurred. At the bottom of the column, the lowest temperature recorded during the month and the day on which it occurred is displayed.

- **Heating Degree-Days**

The number of [heating degree-days](#) accumulated on each day. At the bottom of the column, the total heating degree-days accumulated during the month is displayed. Heating degree-days can be calculated using either the high/low summary or the integration methods. See [NOAA Setup](#) for more info.

- **Cooling Degree-Days**

The number of [cooling degree-days](#) accumulated on each day. At the bottom of the column, the total cooling degree-days accumulated during the month is displayed. Cooling degree-days can be calculated using either the high/low summary or the integration methods. See [NOAA Setup](#) for more info.

- **Rain**

The rainfall accumulated on each day. At the bottom of the column, the total rainfall accumulated during the month is displayed.

- **Average Wind Speed**

The average wind speed for each day. At the bottom of the column, the accumulated average wind speed during the month is displayed.

- **High Wind Speed & Time**

The high wind speed for each day and the time at which it occurred. At the bottom of the column, the highest wind speed for the month and the day on which it occurred is displayed.

- **Dominant Wind Direction**

The dominant wind direction for the day. At the bottom of the column, the dominant wind direction for the month is displayed.

At the bottom of the report, the following monthly information is summarized.

- **Max $\geq 90^{\circ}\text{F}$ (32°C)**

The number of days on which the daily high temperature was 90°F (32°C) or above.

- **Max $\leq 32^{\circ}\text{F}$ (0°C)**

The number of days on which the daily high temperature was 32°F (0°C) or below.

- **Min $\leq 32^{\circ}\text{F}$ (0°C)**

The number of days on which the daily low temperature was 32°F (0°C) or below.

- **Min $\leq 0^{\circ}\text{F}$ (-18°C)**

The number of days on which the daily low temperature was 0°F (-18°C) or below.

Note: Thresholds are always in whole degrees. It's therefore possible for the number of days in these last four items to be different, depending on whether you're using US or metric units. For example, if there were a daily high registered between 9.6 and 89.9°F the maximum would not count as $\geq 90^{\circ}\text{F}$; however, if you were using metric units, the maximum would count as $\geq 32^{\circ}\text{C}$ (the equivalent of 90°F).

- **Max Rain**

The maximum daily rainfall during the month.

- **Days of Rain**

The number of days on which rainfall exceeded $0.01''$ (0.2 mm), $0.1''$ (2 mm), or $1''$ (20 mm) is displayed.

MONTHLY CLIMATOLOGICAL SUMMARY for JAN. 2011

NAME: data CITY: Edmonds STATE: WA
 ELEV: 0 ft LAT: 47° 48'41" N LONG: 122° 22' 57" W

TEMPERATURE (°F), RAIN (in), WIND SPEED (kt)

DAY	MEAN		TIME	LOW	TIME	HEAT	COOL	RAIN	AVG		TIME	DOM
	TEMP	HIGH				DEG	DEG		WIND	SPEED		DIR
1	31.6	37.6	4:24p	25.1	3:24a	33.4	0.0	0.00	2.4	7.8	6:04a	ESE
2	33.3	38.6	3:58p	28.2	7:02a	31.7	0.0	0.00	4.5	13.9	5:54p	ESE
3	34.5	39.3	3:21p	29.1	7:58a	30.5	0.0	0.00	3.7	11.3	12:44a	ESE
4	35.9	40.1	2:58p	30.4	6:16a	29.1	0.0	0.02	4.5	12.2	6:52p	SE
5	42.4	46.7	11:00p	37.9	12:01a	22.6	0.0	0.16	9.3	30.4	5:13p	SSE
6	48.4	49.9	4:42p	46.5	12:01a	16.6	0.0	0.09	9.4	27.8	5:18a	S
7	46.0	49.5	12:01a	38.0	11:49p	19.0	0.0	0.23	10.3	29.6	8:08a	SSE
8	38.6	41.2	4:40p	36.9	5:25a	26.4	0.0	0.01	5.9	18.3	2:58p	SSE
9	37.0	38.6	2:06p	34.4	11:44p	28.0	0.0	0.03	5.0	20.9	3:21p	NNW
10	35.1	38.0	1:45p	32.2	2:14a	29.9	0.0	0.00	4.3	20.0	10:29p	ESE
11	34.3	38.6	2:10p	30.6	5:52a	30.7	0.0	0.00	3.2	17.4	8:10p	ESE
12	43.5	49.5	1:51p	32.9	12:01a	21.5	0.0	0.70	7.1	34.8	10:20a	SE
13	50.8	54.4	3:01p	43.9	1:26a	14.2	0.0	0.29	10.8	37.4	9:09p	S
14	52.2	55.1	2:08p	49.6	4:03a	11.7	0.0	0.02	13.4	39.1	8:26p	S
15	51.8	53.8	11:53p	49.4	6:10p	4.4	0.0	0.21	9.5	27.8	10:15p	SSE
16	54.1	56.7	1:56p	51.7	11:51p	10.9	0.0	0.03	14.2	38.3	9:33a	S
17	47.9	51.9	12:01a	41.9	11:13p	17.1	0.0	0.12	8.1	30.4	3:59a	S
18	41.3	42.6	7:31a	40.1	2:09p	23.7	0.0	0.04	5.5	17.4	11:15p	NNE
19	40.6	42.9	4:24p	37.3	6:20p	24.4	0.0	0.00	4.1	20.0	12:56a	NNW
20	40.9	44.9	11:22p	36.5	1:24a	24.1	0.0	0.07	5.0	20.9	12:52p	SE
21	47.2	49.1	4:43p	44.9	12:01a	17.8	0.0	0.19	8.3	33.0	10:55a	SSE
22	45.0	47.9	2:33p	42.1	8:20p	20.0	0.0	0.00	2.7	13.9	10:41a	S
23	44.7	46.7	9:42p	42.8	6:59a	20.3	0.0	0.03	2.6	10.4	3:33p	SE
24	48.3	49.9	12:31p	46.2	12:01a	16.7	0.0	0.15	5.9	20.9	12:42p	SSE
25	47.7	50.1	3:27p	45.1	10:32p	17.3	0.0	0.01	3.4	13.9	10:59a	S
26	45.2	48.5	11:43a	39.6	11:53p	19.8	0.0	0.00	2.5	11.3	12:55p	ESE
27	43.5	52.5	12:00m	39.9	12:01a	21.5	0.0	0.01	2.6	13.0	10:42p	NNE
28	49.5	53.1	12:07a	46.8	10:53a	15.5	0.0	0.01	9.4	26.1	7:13p	SSE
29	48.0	49.8	12:01a	42.6	11:16p	17.0	0.0	0.13	8.0	22.6	10:48p	S
30	40.6	43.2	12:37a	39.2	8:34a	24.4	0.0	0.00	13.1	27.8	5:07a	NNW
31	37.9	41.2	4:13p	31.9	11:58p	27.1	0.0	0.00	6.2	13.0	6:23a	NNE
	43.2	56.7	16	25.1	1	667.3	0.0	2.55	6.6	39.1	14	S

Max >= 90.0: 0

Max <= 32.0: 0

Min <= 32.0: 6

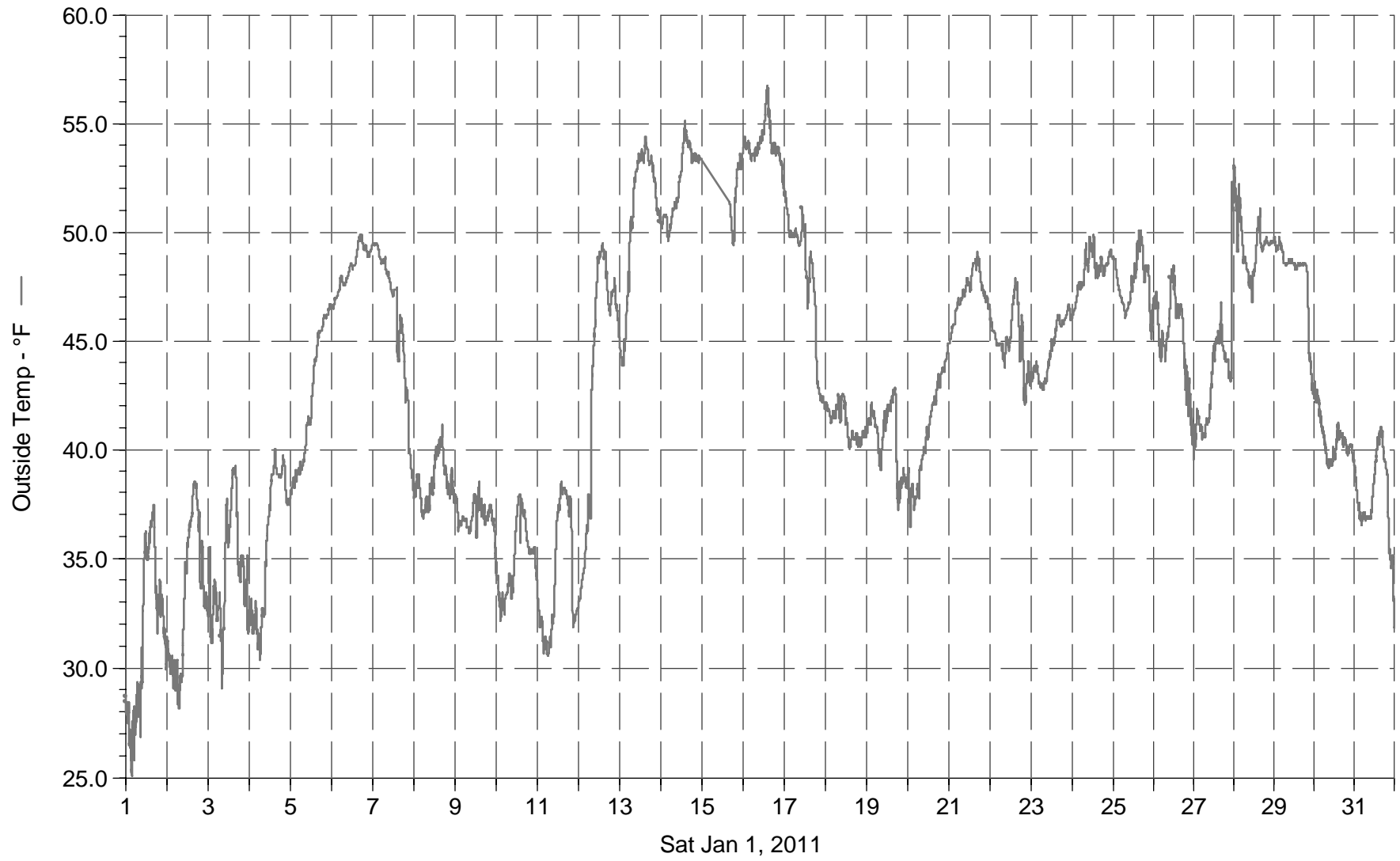
Min <= 0.0: 0

Max Rain: 0.70 ON 01/12/11

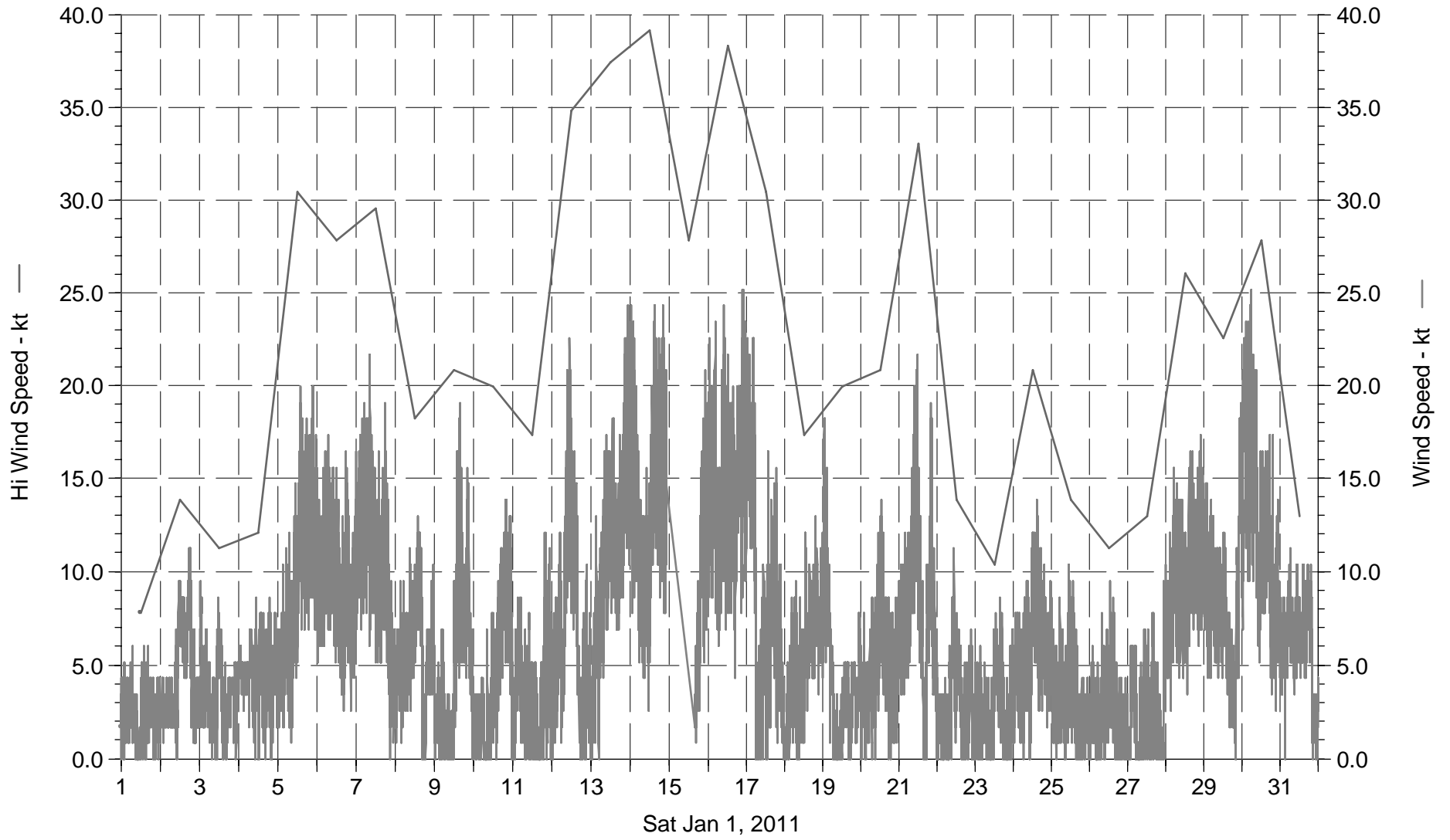
Days of Rain: 17 (>.01 in) 9 (>.1 in) 0 (>1 in)

Heat Base: 65.0 Cool Base: 65.0 Method: Integration

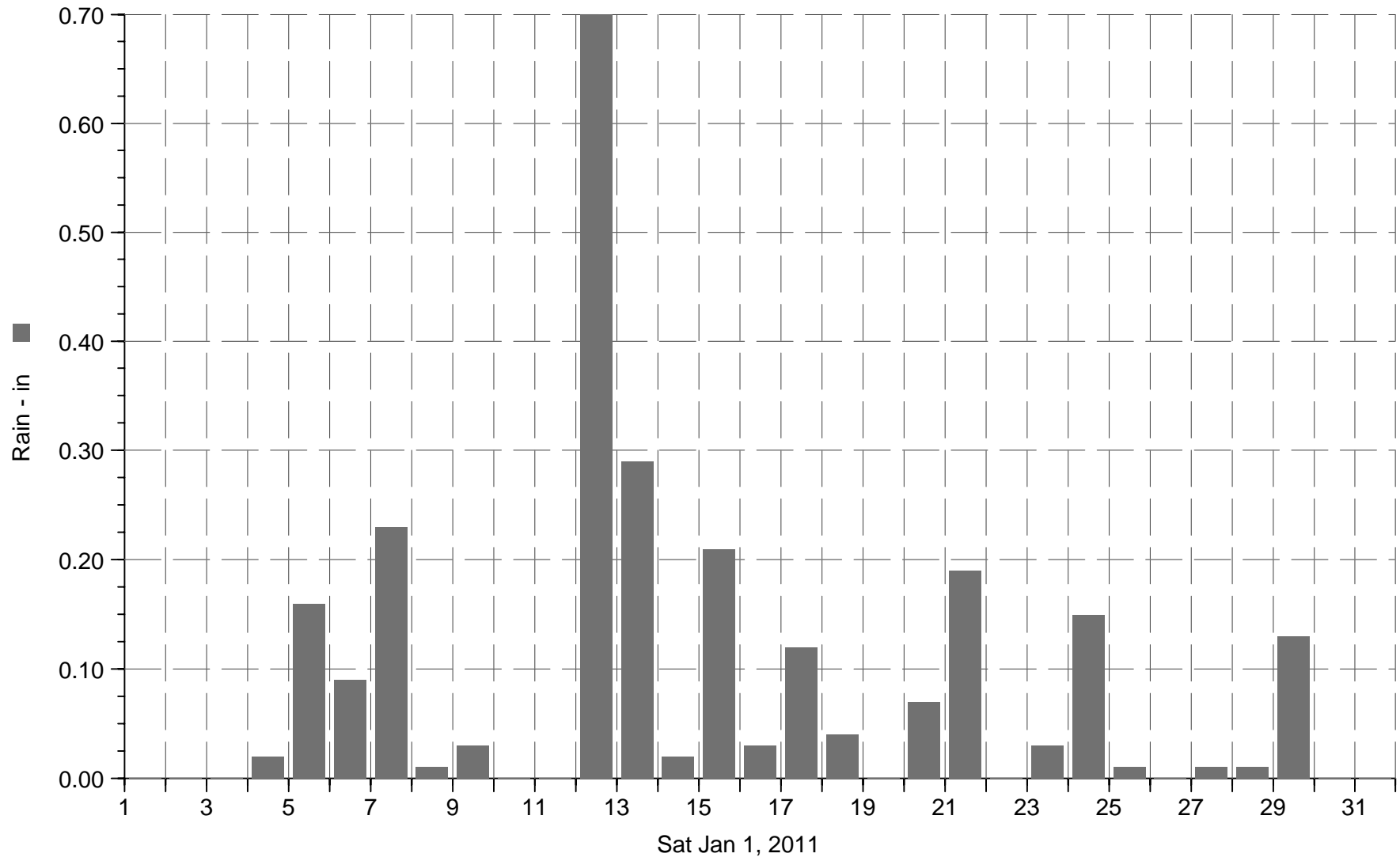
data



data



data



■ Rain